

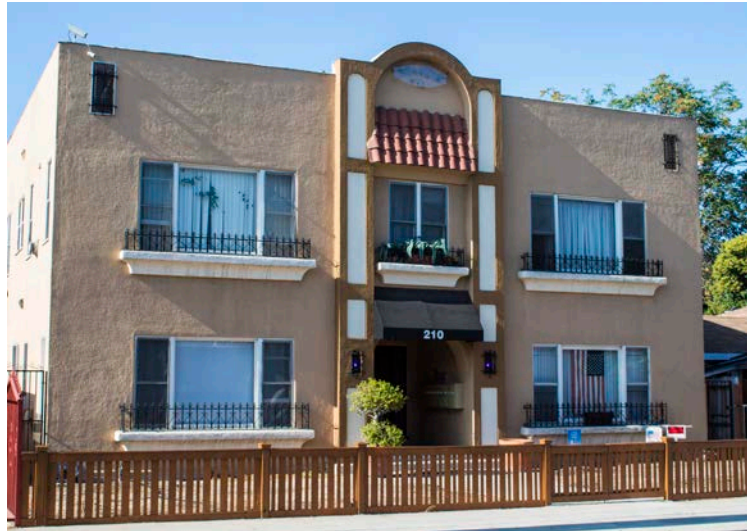
Carter Apartment House

210 W. Truslow Avenue

1928

Mission Revival

Status: Local Landmark



This apartment house is one of the few apartment buildings built in Fullerton prior to World War II and is also a fine representative example of the small apartment houses early Fullerton residents preferred for multi-family housing. The building, with its setback, grassy lawn, and inviting curved walkway to the front entrance, was designed to look like a two-story home instead of an apartment complex.

The eight-unit apartment building was built for Fred Carter, who upon moving to Fullerton in 1928, instantly noticed that the community had a severe housing shortage. He quickly had plans drawn up, and much of the work and furnishings for the apartment building were provided by Fullerton subcontractors and stores.

Only the front elevation of the building exhibits architectural detailing, using elements of the Mission Revival style: a symmetrical placement of double-hung windows on either side of a strong central design feature; a modest arched parapet to cap the central design; an arched opening as part of the recessed entry; and a stucco exterior finish. The base of the five front windows feature oversized stucco detailing which is original. The building is virtually unaltered and now well preserved, retaining a high degree of historic integrity.

Over the years the few apartment houses that were constructed in Fullerton from 1913 to 1933 were razed. The Carter Apartment House is one of the few apartment buildings that still remain from the pre-World War II era.